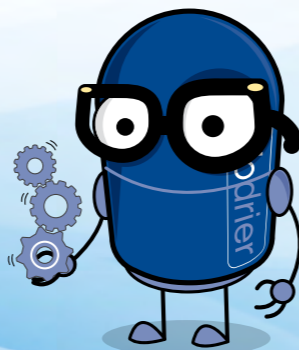


# Biodrier 3D Smart Dry

**INTELLIGENTLY ADJUSTS THE HEAT OUTPUT BASED UPON EXTERNAL AIR TEMPERATURE**



Automatically adjusts  
**COOL** AIR IN WARM MONTHS  
**WARM** AIR IN COLD MONTHS



## The Biodrier 3D Smart Dry

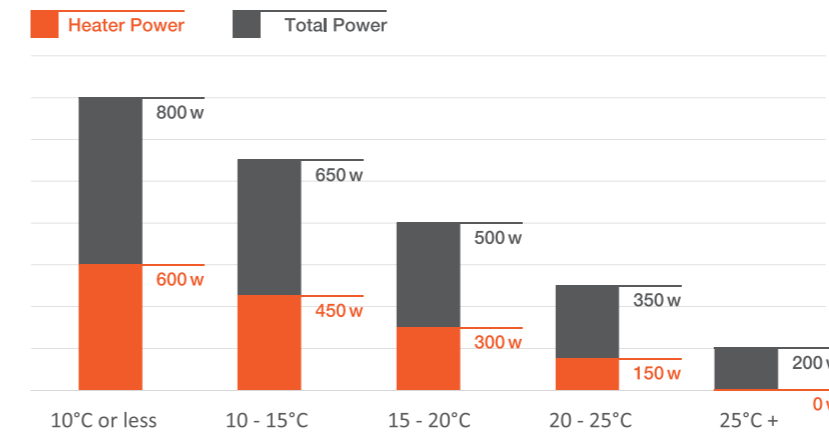
Now even more intelligent, the 3D Smart Dry is a fantastic addition to our range. Featuring very high specifications, unbeatable energy efficiency and superb durability. This is the first hand dryer to automatically adjust to the surrounding ambient air temperature, so you get comfortable, warm air in the winter and energy savings in the summer.

### Anti Bacterial HEPA Filter

The Grade 13 HEPA air filtration system removes dust and bacteria, delivering pure clean air to the hands.

### Intelligent Heating

Save money and energy while not compromising on comfort. The 3D Smart Dry automatically adjusts the heater depending on the ambient temperature of the air surrounding the dryer. This means that in cold temperatures you have a comfortable hand drying experience and in the warmer weather you can reduce your energy consumption and save money.



### Quieter

With a brushless motor and a unique air flow system this hand dryer controls excess noise. This has reduced the noise output from 80 dba of the previous model down to 70 dba. Making this hand dryer ideal for noise sensitive environments such as schools, theatres & hospitals etc.

### Tough & Long Lasting

The 3D Smart Dry is ideal if you want a hard working and tough dryer that requires only minimal maintenance. The case is constructed from a durable, heavy duty stainless steel casing that makes it ideal for use in public or busy washrooms. Powered with a long lasting, high speed, brushless motor the life of the Biodrier 3D Smart Dry is almost infinite!

### Compact Design

Redesigned to take up less room without compromising on performance. The updated shape will fit in with any modern washroom.

## Biodrier 3D Smart Dry Technical Specifications

Item Category	Performance
Operating voltage	220-240Vac, 50 Hz
Air speed	75 m/s, 85 m³/h
Air output temp	Intelligent based on room temp (see table)
Motor type	18,000 rpm, 200 Watts, BLDC brushless DC Motor
Heater element	0-600 Watts (Intelligent)
Motor thermal protection	Auto resetting thermostat turns unit off, 240v at 95°C
Drying time	Under 10 seconds
Circuit operation	Infrared automatic, self adjusting
Timing protection	60 seconds auto shut off
Drip proof	IPX2
Isolation	Class I
Filter	Antibacterial H13 HEPA filter
Net weight	3.3 kg
Unit size	W 228 x H 278 x D 154 mm
Finish	Satin finish stainless steel
Decibel rating	70 dba @ 1 mtr
Approvals	CE, WEEE, <b>GreenSpec®</b>



BRUSHED | BSD60K-BS